



Quickstart user guide

March 2007 v1.2

Thank you for purchasing the VauxCheck software from Gendan.

This document aims to be a quick guide to using the VauxCheck software.

If you require more information, please contact support@vauxcheck.co.uk

Installation

Your welcome email will include information on downloading the VauxCheck software

Once you have downloaded the installation file, double-click on it to begin the Installation.

Follow the on-screen instructions to complete the installation.

Before running the VauxCheck software, please ensure that you have connected the diagnostics interface to your PC (and have installed the drivers per the instructions, if required).

Activation

The first time you run the software, you will be required to enter your activation details – these details will be in your welcome email.

PLEASE NOTE: the activation details are case-sensitive, so must be entered exactly as shown on the activation email.

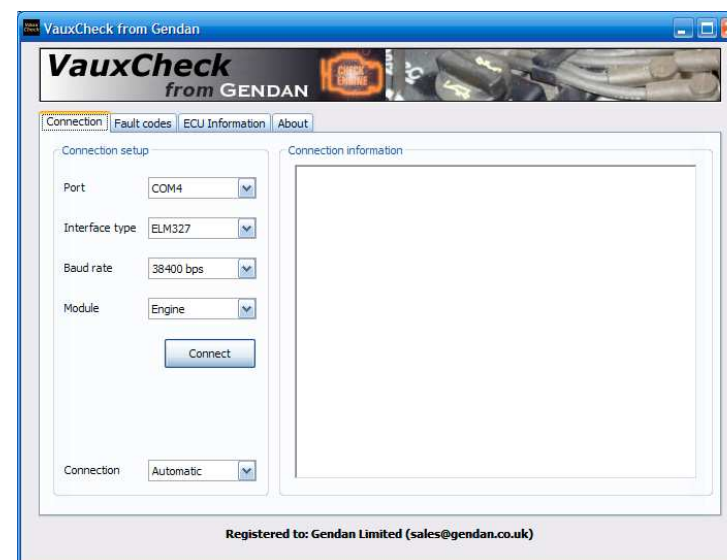
Double click the **VauxCheck** icon, or select Start->Programs->VauxCheck->VauxCheck from the Windows Start menu.



The activation window will appear:

Enter your details and click **Activate**

The main window should then appear.

A screenshot of the 'VauxCheck - Product Activation' dialog box. It has a title bar with the text 'VauxCheck - Product Activation'. Inside, it says 'Please enter your activation details below (case-sensitive)'. There are three input fields: 'Your name', 'Email address', and 'Activation keys' (which is split into two adjacent boxes). At the bottom right, there are two buttons: 'Quit' and 'Activate'.

Using VauxCheck

You can navigate through the software by clicking on the labelled tabs.

Connection tab

Shows current connection settings (PC port and diagnostics interface) and current unit selection (Metric or Imperial)

Fault codes tab

Lists stored and pending fault codes, along with their definitions (where available)

ECU information tab

ECU details (where available)

About tab

Current version information

Connecting to a car

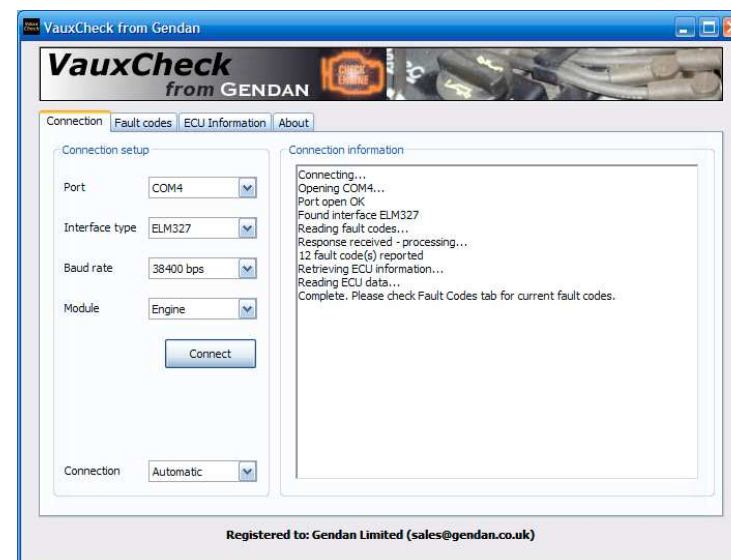
To connect to a car:

- Ensure that the ELM327 interface is securely connected to the PC and to the car, and that the car ignition is on (or the engine is running).
- Select the 'Connection' tab
- In the dropdown, select the correct COM port for your PC connection (your interface instructions and PC manual should help you identify this)
- Select the correct baud rate (leave this set to 38,400bps unless your interface has been specifically set to 9,600bps)
- Click Connect

The connection process will then begin. The status window will display connection progress.

If all goes well, you should see that the status of the various connection phases being displayed, and you will be left with a status of 'Complete'. You can then switch to the other tabs to view fault codes.

If the connection does not complete, please ensure that the settings on the page are correct, and that the car ignition is on. Try the connection again with the engine running. Please also try disconnecting and reconnecting the interface from the car.



If you cannot establish a connection, and the car is listed on our website as being compatible, please contact us with the details: support@enginecheck.co.uk

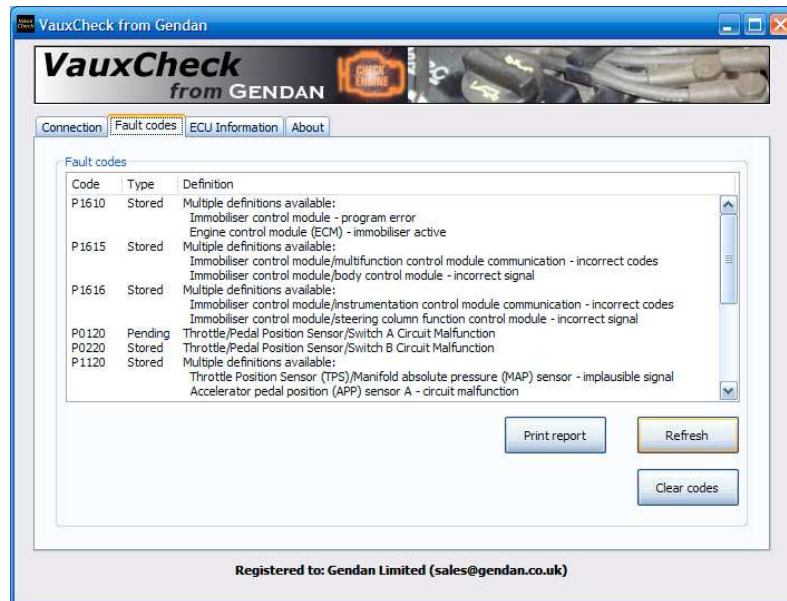
Refresh or Clear Codes not working

Some cars can drop the connection, preventing the 'Clear codes' or 'Refresh' buttons working. If this happens, change the 'Connection' setting to 'Hold Connection' and click the 'Connect' button again to reconnect.

Disconnecting from a car

The software will automatically disconnect from the car once it has read the fault codes.

Fault codes



Fault codes

The fault codes tab will display the fault codes read from the engine-management system on the car. This will include both:

- stored codes** codes indicating faults found by the car
- pending codes** codes that the car is 'keeping an eye on'. A fault has occurred, but the car may need to see it occur over a number of drive cycles before it will log a stored code

Refresh button

This will retrieve the latest information from the car

Clear codes button

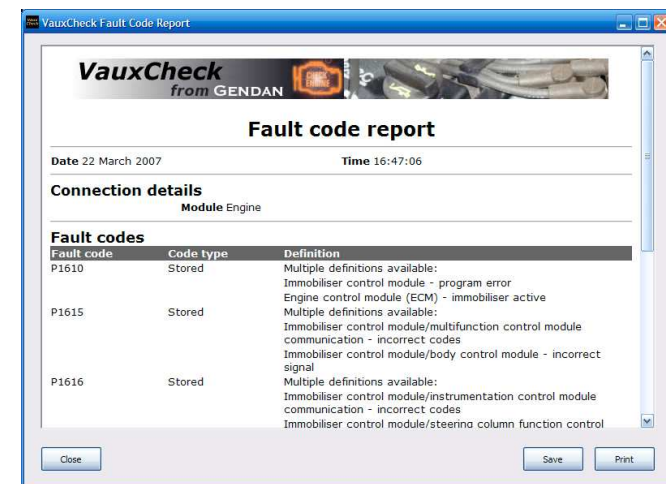
Reset the engine-management system and clear the fault codes.

This will switch the Check Engine light off, and will clear any learned values within the ECU (e.g. fuel trim settings) and also the on-board tests back to 'not complete'.

Over the next few drive cycles, the car will re-run its on-board tests, and will 'relearn' the fuelling settings etc.

Print report button

Print or save a report of the fault codes read from the module

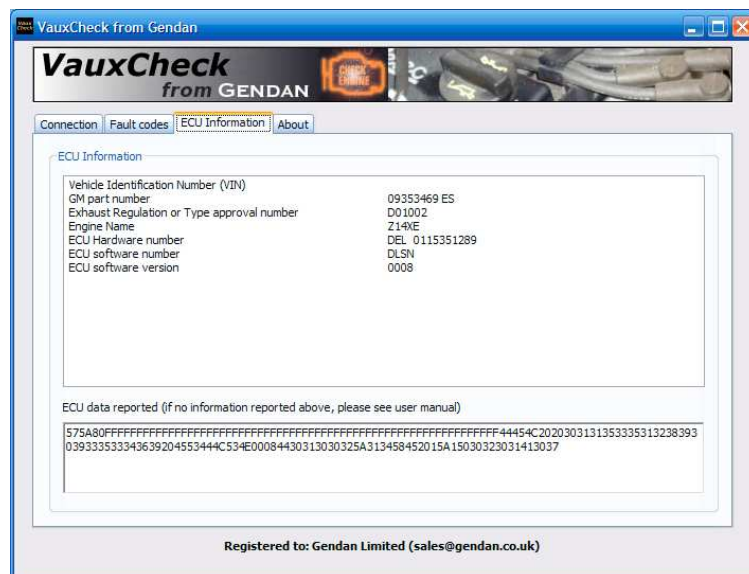


Fault code definitions

VauxCheck contains thousands of fault code definitions. For additional code definitions, please visit our online reference library:

www.gendan.co.uk/codebank

ECU information



Where available, details of the ECU will be displayed on this tab.

If there is no information displayed, or the information does not appear correct, please:

- Select the information on the 'ECU data reported (for debugging)' box
- Press Ctrl and C together to copy the data
- Create a new email and paste the information into the email
- Send the email to support@enginecheck.co.uk with details of the car from which it was read (age, engine, fuel-type, engine-code (if available))

We will then decode the information and update the software to support the details from the ECU.

More details

For more information on the use of the package, please visit the VauxCheck website at:

www.vauxcheck.co.uk

You can also email us at:

support@vauxcheck.co.uk

VauxCheck is copyright 2007 Gendan Limited.

No part of the VauxCheck software or user manual may be reproduced without written permission from Gendan Limited.

Gendan Limited is a limited company based in the UK.